

SELECTION OF  
WINDOW COVERINGS

LOTUS  
&  
WINDOWWARE  
INCORPORATED

Window Blinds Since 1989

2024 CATALOG

800.338.8826

[www.lotusblind.com](http://www.lotusblind.com)



# LOTUS & WINDOWARE INCORPORATED



**LOTUS & WINDOWARE - CHINO, CA**  
Corporate Office | 45,000 Square Foot Warehouse



Lotus maintains warehouse distribution in Memphis, TN and Chino, CA with a total of 165,000square feet of warehouse space.



**LOTUS & WINDOWARE - MEMPHIS, TN**  
Sales Office | 120,000 Square Foot Warehouse

## ABOUT LOTUS & WINDOWARE

Lotus & Windoware, Inc. was established in 1989 as an importer and wholesale distributor of quality window treatments in the United States. Lotus has since expanded its product selection offering the widest selection of stock sizes in the business.

Dedicated to providing you with the very best service available, Lotus maintains two distribution centers: our West Coast facility located in Chino, California and our East Coast

facility in Memphis, Tennessee. This allows for quick delivery anywhere in the continental U.S. We can also service additional markets in Central and South America from our U.S. facilities and directly from our factories in Vietnam. Lotus excels in processing orders from a single carton to multiple containers and everything in between. At Lotus & Windoware, Inc., we are confident that you will find the window treatment solutions to meet your needs.

---

**At Lotus & Windoware, Inc., we are confident that you will find the window treatment solutions to meet your needs.**

---

**CORPORATE OFFICE**  
14450 Yorba Avenue  
Chino, CA 91710  
TEL: 909-606-8866  
FAX: 909-606-8804

**MEMPHIS**  
6225 Global Drive  
Suite 110  
Memphis, TN 38141  
TEL: 901-362-9093  
FAX: 901-362-9674

Lotus & Windoware products are compliant with consumer product safety standards. Please contact your customer service representative or visit the websites of the US Consumer Product Safety Commission and the Window Coverings Safety Council for more information.

[www.cpsc.gov](http://www.cpsc.gov)  
[www.windowcoverings.org](http://www.windowcoverings.org)

All Lotus & Windoware products have been tested and meet the United States CPSC total lead content for mini blinds and have passed the NFPA 701 Flame Test. Please feel free to contact your Lotus & Windoware representative to obtain a copy of these test results or download them from our website at [www.lotusblind.com](http://www.lotusblind.com).

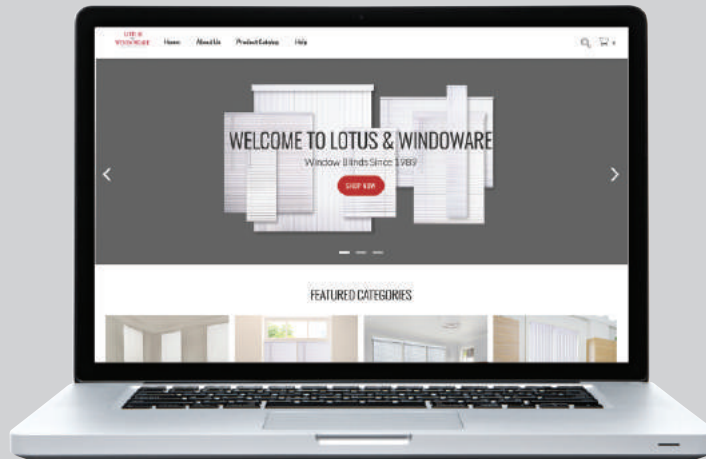
All Lotus & Windoware products are manufactured in an ISO 9000 certified factory.

**Skip the line by visiting our self-service website available 24/7**

Shop our full catalog, create orders, quotes and more!  
Available at [www.lotusblind.com](http://www.lotusblind.com).

## Ready to get started?

Scan the QR for access or to register today!



### Effortless Ordering

By visiting [Lotusblind.com](http://Lotusblind.com), you can easily browse through our extensive range of blinds, shades, and window treatments from the comfort of your home or office.



### Personalized Account

Creating an account on [Lotusblind.com](http://Lotusblind.com) unlocks a world of benefits. Personalize your profile, including your shipping address, payment preferences, and communication settings.



### 24-7 Access

Manage orders anytime, anywhere. Check stock availability, track shipments, and enjoy a seamless shopping experience.

## NEW ARRIVALS

PRODUCT CODE **FTX**

### Faux Wood Blinds SNOW WHITE

PVC Vinyl, Low Profile Headrail

2-1/2" Beaded Valance

2" Wide Slats for Designer Look

PRODUCT CODE **RS**

### Roller Shades WHITE

Blended Polyester Fabric

Child Safe Cordless Design

1% and Blackout

## COMING SOON

### Faux Wood Light Gray Selection



# CORDLESS

## WINDOW COVERINGS

<b>1" Vinyl Mini Blind</b>	<i>PAGE 6-7</i>
<b>1" Vinyl Plus Mini Blind</b>	<i>PAGE 8-9</i>
<b>1" Aluminum Mini Blind</b>	<i>PAGE 10-11</i>
<b>2" Vinyl Plus Blind</b>	<i>PAGE 12-13</i>
<b>2" Faux Wood Bright White Smooth Blind</b>	<i>PAGE 14-15</i>
<b>2" Faux Wood Bright White Embossed Blind</b>	<i>PAGE 16-17</i>
<b>2" Faux Wood Snow White Blind</b>	<i>PAGE 18-19</i>
<b>2" Faux Wood Soft White Blind</b>	<i>PAGE 20-21</i>
<b>2-1/2" Faux Wood Bright White Blind</b>	<i>PAGE 22-23</i>
<b>Roller Shades</b>	<i>PAGE 24-25</i>
<b>3-1/2" Economy Vertical Blind</b>	<i>PAGE 26</i>
<b>Economy Steel Vertical Headrails</b>	<i>PAGE 27</i>
<b>Options Aluminum Vertical Headrails</b>	<i>PAGE 28</i>
<b>3-1/2" Room-Darkening Vertical Vanes</b>	<i>PAGE 29</i>
<b>Quick Reference &amp; Ordering Guide</b>	<i>PAGE 30</i>

PRODUCT CODE

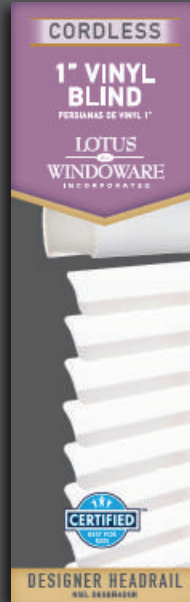
MLX

# 1" Vinyl Mini Blind

AVAILABLE IN WHITE AND ALABASTER



Warehouse and Container



Most Complete Assortment  
of Stock Sizes Available

1" Wide Static Resistant,  
Fade Resistant PVC Slats

1-Year Warranty

Designer PVC Headrail

Hold Down Brackets  
Included With Every Blind

Child-Safe Cordless Design

*All widths are 1/2" less than  
stated size to allow for inside mounting*

## OUR MOST COST-EFFICIENT WINDOW TREATMENT SOLUTION.

The attractive 1" Vinyl Mini Blind sets the standard for simplicity and functionality. Just like the leaves of the lotus flower, the easy to clean vinyl material naturally repels dust, water and grime.

A new headrail design increases both durability and aesthetics, making valances a thing of the past. Both installation and operation are a breeze on this most budget-friendly cordless mini blind.

# SPECIFICATIONS

## » HEADRAIL

Extruded PVC headrail 1.75" width x 1.22" height x 0.06" thick.

## » HEADRAIL ENDCAPS

Injection molded plastic.

## » BOTTOMRAIL

Extruded hollow PVC bottomrail 1.18" width x 0.55" height x 0.057" thick.

## » BOTTOMRAIL ENDCAPS

Injection molded plastic.

## » WAND

Extruded PVC Hex shape. Color coordinated, diameter 0.3937"

## » SLAT

Extruded PVC .013" to .014" thick x 0.976" width with crown of 0.157."

## » TILT ROD

Plated steel, 0.138" diameter.

## » LADDER

Woven polyester ladder 0.86" spacing.

## » TILTER

Injection molded plastic housing.

## » BOTTOMRAIL ANCHORS

Injection molded plastic.

## » MOUNTING BRACKET

Plated steel, hidden.

## » TAPE ROLLER SUPPORT

Injection molded plastic with metal roller minimizing cord fray.

## » TAPE ROLLER

Injection molded plastic with ladder locking legs.

## » INTERNAL CORD

Woven polyester cord 0.035".

## » HOLD DOWN BRACKET

Injection molded plastic.

## » CUSTOMIZATION

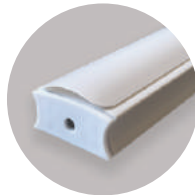
22" and below - 0" can be cut off width. Over 22" - up to 6" total. No more than 10" may be taken off the length to allow the blind to hold its position.



Designer Headrail



Tilter



Bottomrail of Extruded Hollow PVC

PRODUCT CODE **MLX**

<b>- 36 -</b>	<b>- 48 -</b>	46.5 x 48 <sup>W</sup>	38 x 54 <sup>W</sup>	42 x 60 <sup>W</sup>	22 x 64 <sup>W</sup>	57 x 64 <sup>W</sup>	24.5 x 72 <sup>W</sup>	60 x 72 <sup>W</sup>	31 x 84 <sup>W</sup>
22 x 36 <sup>A,W</sup>	17 x 48 <sup>W</sup>	47 x 48 <sup>A,W</sup>	42 x 54 <sup>W</sup>	43 x 60 <sup>A,W</sup>	23 x 64 <sup>W</sup>	58 x 64 <sup>A,W</sup>	25 x 72 <sup>A,W</sup>	62 x 72 <sup>W</sup>	32 x 84 <sup>W</sup>
22.5 x 36 <sup>W</sup>	18 x 48 <sup>W</sup>	48 x 48 <sup>A,W</sup>	43 x 54 <sup>W</sup>	45 x 60 <sup>W</sup>	24 x 64 <sup>A,W</sup>	59 x 64 <sup>W</sup>	26 x 72 <sup>W</sup>	63 x 72 <sup>A,W</sup>	33 x 84 <sup>W</sup>
23 x 36 <sup>W</sup>	20 x 48 <sup>W</sup>	50 x 48 <sup>W</sup>	52 x 54 <sup>W</sup>	46 x 60 <sup>A,W</sup>	46 x 60 <sup>A,W</sup>	60 x 64 <sup>W</sup>	27 x 72 <sup>A,W</sup>	69 x 72 <sup>W</sup>	34 x 84 <sup>W</sup>
24 x 36 <sup>W</sup>	22 x 48 <sup>W</sup>	51 x 48 <sup>W</sup>		46.5 x 60 <sup>W</sup>	26 x 64 <sup>W</sup>	63 x 64 <sup>A,W</sup>	28 x 72 <sup>W</sup>	70 x 72 <sup>W</sup>	35 x 84 <sup>W</sup>
27 x 36 <sup>W</sup>	23 x 48 <sup>A,W</sup>	52 x 48 <sup>W</sup>	<b>- 60 -</b>	47 x 60 <sup>W</sup>	27 x 64 <sup>A,W</sup>	64 x 64 <sup>W</sup>	29 x 72 <sup>A,W</sup>	70.5 x 72 <sup>W</sup>	36 x 84 <sup>W</sup>
28 x 36 <sup>W</sup>	24 x 48 <sup>A,W</sup>	54 x 48 <sup>W</sup>	17 x 60 <sup>W</sup>	48 x 60 <sup>W</sup>	28 x 64 <sup>W</sup>	68 x 64 <sup>W</sup>	30 x 72 <sup>A,W</sup>	71 x 72 <sup>A,W</sup>	37 x 84 <sup>W</sup>
30 x 36 <sup>W</sup>	25 x 48 <sup>W</sup>	56 x 48 <sup>W</sup>	18 x 60 <sup>W</sup>	54 x 60 <sup>W</sup>	29 x 64 <sup>W</sup>	69 x 64 <sup>W</sup>	30.5 x 72 <sup>W</sup>	72 x 72 <sup>A,W</sup>	38 x 84 <sup>A,W</sup>
31 x 36 <sup>W</sup>	26 x 48 <sup>W</sup>	57 x 48 <sup>W</sup>	22 x 60 <sup>W</sup>	58 x 60 <sup>W</sup>	30 x 64 <sup>A,W</sup>	70 x 64 <sup>W</sup>	31 x 72 <sup>A,W</sup>	78 x 72 <sup>W</sup>	39 x 84 <sup>W</sup>
33 x 36 <sup>W</sup>	27 x 48 <sup>A,W</sup>	58 x 48 <sup>A,W</sup>	23 x 60 <sup>W</sup>	58.5 x 60 <sup>W</sup>	31 x 64 <sup>A,W</sup>	71 x 64 <sup>W</sup>	32 x 72 <sup>A,W</sup>		40 x 84 <sup>W</sup>
34 x 36 <sup>W</sup>	28 x 48 <sup>W</sup>	59 x 48 <sup>A,W</sup>	24 x 60 <sup>W</sup>	59 x 60 <sup>A,W</sup>	32 x 64 <sup>A,W</sup>	72 x 64 <sup>W</sup>	33 x 72 <sup>W</sup>		42 x 84 <sup>W</sup>
34.5 x 36 <sup>W</sup>	29 x 48 <sup>W</sup>	60 x 48 <sup>A,W</sup>	27 x 60 <sup>W</sup>	60 x 60 <sup>W</sup>	33 x 64 <sup>W</sup>		34 x 72 <sup>A,W</sup>	<b>- 78 -</b>	43 x 84 <sup>W</sup>
35 x 36 <sup>W</sup>	30 x 48 <sup>W</sup>	62 x 48 <sup>W</sup>	28 x 60 <sup>W</sup>	61 x 60 <sup>W</sup>	34 x 64 <sup>A,W</sup>		34.5 x 72 <sup>W</sup>	34 x 78 <sup>W</sup>	46 x 84 <sup>A,W</sup>
36 x 36 <sup>W</sup>	31 x 48 <sup>W</sup>	63 x 48 <sup>W</sup>	28.5 x 60 <sup>W</sup>	62 x 60 <sup>W</sup>	34.5 x 64 <sup>W</sup>	<b>- 68 -</b>	35 x 72 <sup>A,W</sup>	35 x 78 <sup>W</sup>	47 x 84 <sup>W</sup>
38 x 36 <sup>W</sup>	32 x 48 <sup>W</sup>	68 x 48 <sup>W</sup>	29 x 60 <sup>W</sup>	63 x 60 <sup>W</sup>	35 x 64 <sup>A,W</sup>	24 x 68 <sup>W</sup>	36 x 72 <sup>A,W</sup>	36 x 78 <sup>W</sup>	48 x 84 <sup>W</sup>
39 x 36 <sup>W</sup>	33 x 48 <sup>W</sup>	69 x 48 <sup>W</sup>	30 x 60 <sup>W</sup>	65 x 60 <sup>W</sup>	36 x 64 <sup>A,W</sup>	25 x 68 <sup>W</sup>	37 x 72 <sup>W</sup>		52 x 84 <sup>W</sup>
45 x 36 <sup>W</sup>	34 x 48 <sup>A,W</sup>	70 x 48 <sup>W</sup>	30.5 x 60 <sup>W</sup>	69 x 60 <sup>W</sup>	37 x 64 <sup>W</sup>	<b>- 72 -</b>	38 x 72 <sup>W</sup>	<b>- 84 -</b>	54 x 84 <sup>W</sup>
46 x 36 <sup>W</sup>	34.5 x 48 <sup>W</sup>	70.5 x 48 <sup>W</sup>	31 x 60 <sup>A,W</sup>	70 x 60 <sup>W</sup>	38 x 64 <sup>A,W</sup>		39 x 72 <sup>A,W</sup>		59 x 84 <sup>W</sup>
47 x 36 <sup>W</sup>	35 x 48 <sup>A,W</sup>	71 x 48 <sup>A,W</sup>	32 x 60 <sup>W</sup>	70 x 60 <sup>W</sup>	39 x 64 <sup>A,W</sup>	11 x 72 <sup>W</sup>	40 x 72 <sup>W</sup>		60 x 84 <sup>W</sup>
48 x 36 <sup>W</sup>	36 x 48 <sup>A,W</sup>	72 x 48 <sup>A,W</sup>	33 x 60 <sup>W</sup>	70.5 x 60 <sup>W</sup>	40 x 64 <sup>A,W</sup>	12 x 72 <sup>W</sup>	41 x 72 <sup>W</sup>		
59 x 36 <sup>W</sup>	38 x 48 <sup>W</sup>		34 x 60 <sup>A,W</sup>	71 x 60 <sup>A,W</sup>	41 x 64 <sup>W</sup>	13 x 72 <sup>W</sup>	42 x 72 <sup>W</sup>		
60 x 36 <sup>W</sup>	39 x 48 <sup>W</sup>	<b>- 54 -</b>	34.5 x 60 <sup>A,W</sup>	72 x 60 <sup>W</sup>	42 x 64 <sup>W</sup>	14 x 72 <sup>W</sup>	43 x 72 <sup>A,W</sup>		<b>- 96 -</b>
70 x 36 <sup>W</sup>	40 x 48 <sup>W</sup>	28 x 54 <sup>W</sup>	35 x 60 <sup>A,W</sup>		43 x 64 <sup>W</sup>	15 x 72 <sup>W</sup>	44 x 72 <sup>W</sup>		34 x 96 <sup>W</sup>
71 x 36 <sup>W</sup>	41 x 48 <sup>W</sup>	30 x 54 <sup>W</sup>	35.5 x 60 <sup>W</sup>	<b>- 64 -</b>	44 x 64 <sup>W</sup>	16 x 72 <sup>W</sup>	45 x 72 <sup>W</sup>		35 x 96 <sup>W</sup>
72 x 36 <sup>W</sup>	42 x 48 <sup>W</sup>	31 x 54 <sup>W</sup>	36 x 60 <sup>A,W</sup>	16 x 64 <sup>W</sup>	45 x 64 <sup>W</sup>	17 x 72 <sup>A,W</sup>	46 x 72 <sup>W</sup>		36 x 96 <sup>W</sup>
	43 x 48 <sup>W</sup>	33 x 54 <sup>W</sup>	37 x 60 <sup>W</sup>	18 x 64 <sup>W</sup>	46 x 64 <sup>A,W</sup>	18 x 72 <sup>W</sup>	47 x 72 <sup>A,W</sup>		39 x 96 <sup>W</sup>
<b>- 42 -</b>	44 x 48 <sup>W</sup>	34 x 54 <sup>W</sup>	38 x 60 <sup>A,W</sup>	19 x 64 <sup>W</sup>	47 x 64 <sup>A,W</sup>	19 x 72 <sup>W</sup>	48 x 72 <sup>W</sup>		43 x 96 <sup>W</sup>
24 x 42 <sup>W</sup>	45 x 48 <sup>A,W</sup>	34.5 x 54 <sup>W</sup>	38.5 x 60 <sup>W</sup>	20 x 64 <sup>W</sup>	48 x 64 <sup>A,W</sup>	21 x 72 <sup>W</sup>	52 x 72 <sup>W</sup>		
25 x 42 <sup>W</sup>	46 x 48 <sup>A,W</sup>	35 x 54 <sup>W</sup>	39 x 60 <sup>W</sup>	21 x 64 <sup>W</sup>	52 x 64 <sup>A,W</sup>	22 x 72 <sup>W</sup>	54 x 72 <sup>W</sup>		
29 x 42 <sup>W</sup>		36 x 54 <sup>W</sup>	40 x 60 <sup>W</sup>		53 x 64 <sup>A,W</sup>	23 x 72 <sup>A,W</sup>	58 x 72 <sup>W</sup>		
			41 x 60 <sup>W</sup>		55 x 64 <sup>W</sup>	24 x 72 <sup>A,W</sup>	59 x 72 <sup>A,W</sup>		

**PACKAGING** Up to 47.5" wide: 6 per carton | 48" and wider: 4 per carton

A = Available in Alabaster | W = Available in White | A,W = Available in Alabaster and White

PRODUCT CODE

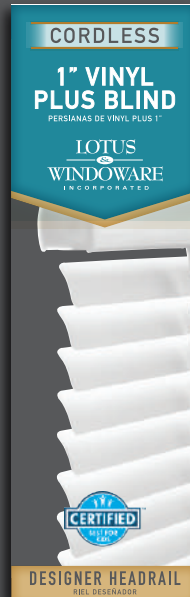
RLX

# 1" Vinyl Plus Mini Blind

AVAILABLE IN WHITE



Warehouse and Container



Most Complete Assortment  
of Stock Sizes Available

1" Room-Darkening PVC  
Slats with Static and  
Fade-Resistant Formulation

1-Year Warranty

Designer Steel Headrail

Hold Down Brackets  
Included With Every Blind

Child-Safe Cordless Design

*All widths are 1/2" less than  
stated size to allow for inside mounting*

## THE REINFORCED 1" VINYL PLUS MINI BLIND

has all the same great features of our regular 1" Vinyl Mini Blind further enhanced with steel head and bottomrails and premium room darkening, warp resistant PVC slats.

Designed for durability, the 1" Vinyl Plus Mini Blind withstands heavy-duty use without compromising design. And the new attractive headrail increases that strength, even making the need for valances a thing of the past.



# SPECIFICATIONS

## » HEADRAIL

Roll formed steel headrail 1.52" width x 1.06" height x 0.016" thick.

## » HEADRAIL ENDCAPS

Injection molded plastic.

## » BOTTOMRAIL

Roll formed steel bottomrail 1.10" width x 0.59" height x 0.016" thick.

## » BOTTOMRAIL ENDCAPS

Injection molded plastic.

## » WAND

Extruded PVC Hex shape. Color coordinated, diameter 0.36"

## » SLAT

Extruded PVC .013" to .014" thick x 0.967" width with crown of 0.157."

## » TILT ROD

Plated steel, 0.137 diameter.

## » TILTER

Injection molded plastic housing.

## » LADDER

Woven polyester ladder 0.86" spacing.

## » BOTTOMRAIL ANCHORS

Injection molded plastic.

## » HOLD DOWN BRACKET

Injection molded plastic.

## » MOUNTING BRACKET

Plated steel, hidden.

## » CUSTOMIZATION

22" and below - 0" can be cut off width.  
Over 22" - up to 6" total. No more than 10" may be taken off the length to allow the blind to hold its position.



Designer Steel Headrail



Tilter



Bottomrail of Roll Formed Metal

PRODUCT CODE **RLX**

### -36-

22 x 36
23 x 36
30 x 36
34 x 36
34.5 x 36
35 x 36
47 x 36
59 x 36
70.5 x 36
71 x 36

### 58.5 x 48

59 x 48
70 x 48
70.5 x 48
71 x 48
72 x 48
82.5 x 48
83 x 48
94.5 x 48
95 x 48
96 x 48

### 58.5 x 60

59 x 60
70 x 60
70.5 x 60
71 x 60
72 x 60
80 x 60
82.5 x 60
85 x 60
95 x 60

### -72-

23 x 72
24 x 72
25 x 72
26 x 72
27 x 72
28.5 x 72
29 x 72
30 x 72
31 x 72
34 x 72

### -84-

16.5 x 84
23 x 84
24 x 84
27 x 84
28 x 84
29 x 84
31 x 84
35 x 84
48 x 84
70.5 x 84

### -42-

25 x 42
---------

### -60-

23 x 60
27 x 60
30 x 60

### -64-

29 x 64
30 x 64
31 x 64
32 x 64
34 x 64
35 x 64
36 x 64
39 x 64
46 x 64
47 x 64
48 x 64
70 x 64
71 x 64
72 x 64

### 34.5 x 72

35 x 72
36 x 72
38 x 72
39 x 72
40 x 72
43 x 72
47 x 72
48 x 72
59 x 72
62 x 72
63 x 72
71 x 72
72 x 72
75 x 72

### -96-

27 x 96
31 x 96
48 x 96
72 x 96

### -48-

23 x 48
29 x 48
30 x 48
31 x 48
34 x 48
34.5 x 48
35 x 48
39 x 48
45 x 48
46 x 48
46.5 x 48
47 x 48
48 x 48
58 x 48

### 31 x 60

33 x 60
34 x 60
34.5 x 60
35 x 60
36 x 60
38 x 60
39 x 60
42 x 60
43 x 60
46 x 60
46.5 x 60
47 x 60
52 x 60
54 x 60

### -68-

25 x 68
---------

95 x 72
---------

PRODUCT CODE

AMX

# 1" Aluminum Mini Blind

AVAILABLE IN WHITE AND ALABASTER



## Warehouse and Container



Most Complete Assortment  
of Stock Sizes Available

1" Wide 6 Gauge Crease  
Resistant, Static Resistant  
Aluminum Slat

1-Year Warranty

Metal Headrail & Bottomrail

Hold Down Brackets Included  
With Every Blind

Child-Safe Cordless Design

*All widths are 1/2" less than  
stated size to allow for inside mounting*

**THE STALK OF THE LOTUS FLOWER IS EASILY BENT BUT EXTREMELY DIFFICULT TO BREAK DUE TO ITS INCREDIBLY STRONG FIBERS.** Our 1" Aluminum Mini Blind is engineered using static and crease resistant aluminum slats, designed to spring back if pulled out of shape. Steel head and bottomrails provide maximum support.

Now with a sleek, modern headrail, there's no longer any need for valances, making our 1" Aluminum Mini Blind even more durable and simple to install.

# SPECIFICATIONS

## » HEADRAIL

Roll formed steel headrail 1.52" width x 1.06" height x 0.016" thick.

## » HEADRAIL ENDCAPS

Injection molded plastic.

## » BOTTOMRAIL

Roll formed steel bottomrail 1.10" width x 0.59" height x 0.016" thick.

## » BOTTOMRAIL ENDCAPS

Injection molded plastic.

## » WAND

Extruded clear acrylic Hex shape, 0.29" across flats.

## » SLAT

Painted aluminum 0.006" thickness after coating x 0.97" width with crown of 0.079."

## » TAPE ROLLER SUPPORT

Injection molded plastic with metal roller minimizing cord tray.

## » TAPE ROLLER

Injection molded plastic with ladder locking legs.

## » TILT ROD

Plated steel, 0.137 diameter.

## » TILTER

Injection molded plastic housing.

## » LADDER

Woven polyester ladder 0.86" spacing.

## » BOTTOMRAIL ANCHORS

Injection molded plastic.

## » HOLD DOWN BRACKET

Injection molded plastic.

## » MOUNTING BRACKET

Plated steel, hidden.

## » CUSTOMIZATION

22" and below - 0" can be cut off width.  
Over 22" - up to 6" total. No more than 10" may be taken off the length to allow the blind to hold its position.



Designer Steel Headrail



Tilter



Bottomrail of Roll Formed Metal

PRODUCT CODE

**AMX**

<b>- 36 -</b>	<b>- 60 -</b>	<b>- 64 -</b>	69.5 x 72 <sup>W</sup>
23 x 36 <sup>A,W</sup>	17 x 60 <sup>W</sup>	30 x 64 <sup>W</sup>	70 x 72 <sup>W</sup>
34.5 x 36 <sup>A,W</sup>	22.5 x 60 <sup>A,W</sup>	34 x 64 <sup>W</sup>	70.5 x 72 <sup>W</sup>
35 x 36 <sup>W</sup>	23 x 60 <sup>A,W</sup>	34.5 x 64 <sup>W</sup>	71 x 72 <sup>A,W</sup>
46.5 x 36 <sup>A</sup>	27 x 60 <sup>W</sup>	36 x 64 <sup>W</sup>	72 x 72 <sup>W</sup>
70.5 x 36 <sup>A,W</sup>	29 x 60 <sup>A,W</sup>	70 x 64 <sup>W</sup>	83 x 72 <sup>W</sup>
	30 x 60 <sup>W</sup>		89 x 72 <sup>W</sup>
	31 x 60 <sup>A,W</sup>		95 x 72 <sup>W</sup>
<b>- 48 -</b>	34 x 60 <sup>A,W</sup>	<b>- 68 -</b>	<b>- 84 -</b>
22.5 x 48 <sup>A</sup>	34.5 x 60 <sup>A,W</sup>	25 x 68 <sup>A,W</sup>	23 x 84 <sup>W</sup>
23 x 48 <sup>W</sup>	35 x 60 <sup>A,W</sup>		25 x 84 <sup>W</sup>
29 x 48 <sup>W</sup>	36 x 60 <sup>A,W</sup>	<b>- 72 -</b>	27 x 84 <sup>W</sup>
30 x 48 <sup>A,W</sup>	39 x 60 <sup>W</sup>	23 x 72 <sup>A,W</sup>	29 x 84 <sup>W</sup>
34 x 48 <sup>A,W</sup>	43 x 60 <sup>A,W</sup>	24 x 72 <sup>W</sup>	36 x 84 <sup>W</sup>
34.5 x 48 <sup>A,W</sup>	46 x 60 <sup>W</sup>	25 x 72 <sup>A,W</sup>	47 x 84 <sup>W</sup>
35 x 48 <sup>W</sup>	46.5 x 60 <sup>A,W</sup>	27 x 72 <sup>W</sup>	59 x 84 <sup>W</sup>
36 x 48 <sup>A</sup>	47 x 60 <sup>A,W</sup>	29 x 72 <sup>A,W</sup>	
46 x 48 <sup>A,W</sup>	54 x 60 <sup>W</sup>	31 x 72 <sup>A,W</sup>	<b>- 96 -</b>
46.5 x 48 <sup>A,W</sup>	58 x 60 <sup>W</sup>	34 x 72 <sup>A,W</sup>	35 x 96 <sup>W</sup>
47 x 48 <sup>A,W</sup>	58.5 x 60 <sup>A,W</sup>	34.5 x 72 <sup>W</sup>	43 x 96 <sup>W</sup>
48 x 48 <sup>W</sup>	59 x 60 <sup>A,W</sup>	35 x 72 <sup>A,W</sup>	48 x 96 <sup>W</sup>
58 x 48 <sup>A,W</sup>	62 x 60 <sup>W</sup>	39 x 72 <sup>A,W</sup>	
58.5 x 48 <sup>A,W</sup>	63 x 60 <sup>A,W</sup>	42 x 72 <sup>W</sup>	<b>- 108 -</b>
59 x 48 <sup>W</sup>	70 x 60 <sup>A,W</sup>	43 x 72 <sup>A,W</sup>	27 x 108 <sup>W</sup>
70 x 48 <sup>W</sup>	70.5 x 60 <sup>A,W</sup>	47 x 72 <sup>W</sup>	36 x 108 <sup>W</sup>
70.5 x 48 <sup>A,W</sup>	71 x 60 <sup>A,W</sup>	48 x 72 <sup>A,W</sup>	39 x 108 <sup>W</sup>
71 x 48 <sup>W</sup>	72 x 60 <sup>W</sup>	54 x 72 <sup>A,W</sup>	47 x 108 <sup>W</sup>
72 x 48 <sup>W</sup>	78 x 60 <sup>W</sup>	59 x 72 <sup>A,W</sup>	
83 x 48 <sup>W</sup>	82.5 x 60 <sup>A,W</sup>	63 x 72 <sup>A,W</sup>	
94.5 x 48 <sup>A</sup>	95 x 60 <sup>A,W</sup>	69 x 72 <sup>W</sup>	
95 x 48 <sup>W</sup>			

**PACKAGING** Up to 47.5" wide: 6 per carton | 48" and wider: 4 per carton

A = Available in Alabaster | W = Available in White | A,W = Available in Alabaster and White

# 2" Vinyl Plus Blind

AVAILABLE IN WHITE



## Warehouse and Container



Contemporary 2" Designer Look

1-Year Warranty

Sturdy Steel Headrail

Matching Valance

Child-Safe Cordless Design

*All widths are 1/2" less than stated size to allow for inside mounting*

**THE LOTUS & WINDOWARE 2" VINYL PLUS BLIND IS THE CHOICE FOR CONTRACTORS ON A LIMITED BUDGET WHO WANT AN ATTRACTIVE, DESIGNER LOOK.**

Our 2" Vinyl Plus Blind is made with a durable metal headrail and comes with a 2" valance.

The static-resistant slats of the 2" Vinyl Plus Blind won't warp or crack. The durable design paired with room-darkening slats make these a great choice for any sunny spot!

# SPECIFICATIONS

## » HEADRAIL

Painted roll formed low profile steel headrail 2.28" width x 1.55" height x 0.0157" thick.

## » HEADRAIL ENDCAPS

Steel box bracket.

## » BOTTOMRAIL

Hollow extruded PVC bottomrail 2.05" width x 0.866" height x 0.075" thick.

## » BOTTOMRAIL ENDCAPS

Injection molded plastic.

## » WAND

Extruded PVC round shap. 0.394" diameter.

## » SLAT

Extruded PVC .021" thick x 1.97" width.

## » TAPE ROLLER SUPPORT

Injection molded plastic with metal roller minimizing cord tray.

## » TAPE ROLLER

Injection molded plastic with ladder locking legs.

## » TILT ROD

Plated steel. 0.25 diameter."

## » TILTER

Injection molded plastic clear housing.

## » LADDER

Woven polyester ladder 2.126" spacing.

## » MOUNTING BRACKET

Painted steel with hinged locking front cover.



Headrail



Tilter



Bottomrail of Extruded PVC



PRODUCT CODE **RTX**

<b>- 36 -</b>	<b>- 60 -</b>	59 x 60	27 x 72	<b>- 84 -</b>
23 x 36	17 x 60	70 x 60	28 x 72	23 x 84
34.5 x 36	22 x 60	70.5 x 60	29 x 72	25 x 84
35 x 36	23 x 60	71 x 60	30 x 72	27 x 84
	27 x 60	72 x 60	31 x 72	29 x 84
	28 x 60		34 x 72	31 x 84
<b>- 48 -</b>	29 x 60	<b>- 64 -</b>	34.5 x 72	35 x 84
23 x 48	31 x 60	34 x 64	35 x 72	39 x 84
27 x 48	34 x 60		36 x 72	43 x 84
29 x 48	34.5 x 60	<b>- 68 -</b>	39 x 72	54 x 84
35 x 48	35 x 60	25 x 68	42 x 72	
39 x 48	36 x 60		43 x 72	<b>- 96 -</b>
46 x 48	38 x 60		46 x 72	23 x 96
46.5 x 48	39 x 60	<b>- 72 -</b>	47 x 72	27 x 96
47 x 48	42.5 x 60	17 x 72	48 x 72	29 x 96
54 x 48	43 x 60	19 x 72	54 x 72	31 x 96
58 x 48	46 x 60	23 x 72	58 x 72	35 x 96
58.5 x 48	46.5 x 60	24 x 72	61 x 72	36 x 96
59 x 48	47 x 60	24.5 x 72	62 x 72	39 x 96
63 x 48	48 x 60	25 x 72	63 x 72	43 x 96
70 x 48	58 x 60	26 x 72	70 x 72	
71 x 48	58.5 x 60		70.5 x 72	
			71 x 72	

**PACKAGING** Up to 36" wide: 4 per carton. | 36.5" to 47.5" wide: 3 per carton. | 48" or wider: 2 per carton.

Available in White

# 2" Faux Wood Blind Bright White-Smooth



## Warehouse and Container



Most Complete Assortment  
of Stock Sizes Available

2" Wide Slats for Designer Look

1-Year Warranty

3-1/4" Crown Valance

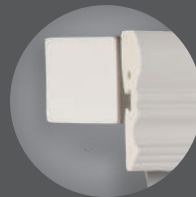
3/4" Returns

Heavy Duty Metal,  
Low Profile Headrail

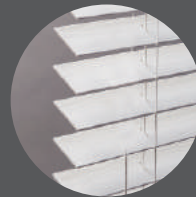
Static Resistant Slats  
Won't Warp or Crack

Child-Safe Cordless Design

*All widths are 1/2" less than  
stated size to allow for inside mounting*



Crown Valance with  
Low Profile Headrail



Slat - Flat  
PVC Foam



Bottomrail - Hollow  
Extruded PVC

**THE BEAUTIFUL LOTUS & WINDOWARE 2" FAUX WOOD BLIND OFFERS THE WARM LOOK OF WOOD AT AN AFFORDABLE PRICE.** The 2" Faux Wood Blind is engineered using a unique steel headrail with new memory flexibility technology making it more durable. The specially engineered hollow bottomrail makes operation smooth and holds slats in perfect alignment.

Our 2" Faux Wood Blind is made of a static and fade resistant synthetic material that won't crack, split or warp. The elegance, low maintenance and affordability of our 2" Faux Wood Bright White Blind makes it the perfect compliment to any window.

# SPECIFICATIONS

- » **HEADRAIL**  
Painted roll formed low profile steel headrail 2.28" width x 1.55" height x 0.04" thick.
- » **HEADRAIL ENDCAPS**  
Injection molded PVC.
- » **BOTTOMRAIL**  
Hollow extruded PVC bottomrail 2.05" width x 0.866" height x 0.075" thick.
- » **BOTTOMRAIL ENDCAPS**  
Injection molded plastic.
- » **WAND**  
Extruded PVC round shap. 0.394" diameter.
- » **SLAT**  
Smooth finish Faux wood 0.11" thick x 1.98" width.
- » **VALANCE**  
Smooth finish Faux wood crown valance 0.177" thick x 3.25" width.
- » **TAPE ROLLER SUPPORT**  
Injection molded plastic with metal roller minimizing cord tray.
- » **TAPE ROLLER**  
Injection molded plastic with ladder locking legs.
- » **TILT ROD**  
Plated steel, diameter 0.22".
- » **TILTER**  
Injection molded plastic clear housing.
- » **LADDER**  
Woven polyester ladder 2.126" spacing.
- » **BOTTOMRAIL ANCHORS**  
Injection molded plastic.
- » **CENTER SUPPORT**  
Painted steel.
- » **MOUNTING BRACKET**  
Painted steel with hinged locking front cover.
- » **HOLD DOWN BRACKET**  
Plated steel.

## CROWN VALANCES

Available in Bright White

**Miter-Cut** PRODUCT CODE **CV-M**

26      37      72

**Straight-Cut** PRODUCT CODE **CV-S**

35      70      108  
63      71

## CROWN VALANCE RETURN SETS

Available in Bright White

5/8"    1-5/8"    2-1/2"  
3/4"

PRODUCT CODE

**CVR-M** (Mitered)

**CVR-S** (Straight - uses CVCorner clip)

PRODUCT CODE

# FLX

**-24-**

22.5 x 24  
23 x 24  
35 x 24

**-36-**

16.5 x 36  
22 x 36  
22.5 x 36  
23 x 36  
24 x 36  
27 x 36  
28 x 36  
29 x 36  
30 x 36  
31 x 36  
32 x 36  
34 x 36  
34.5 x 36  
35 x 36  
36 x 36  
46 x 36  
46.5 x 36  
47 x 36  
48 x 36  
59 x 36  
71 x 36

**-42-**

23 x 42  
24 x 42  
29 x 42  
34.5 x 42  
58.5 x 42

**-48-**

18 x 48  
22 x 48  
22.5 x 48  
23 x 48  
26 x 48  
27 x 48  
28.5 x 48  
29 x 48  
30 x 48  
31 x 48  
33 x 48  
34 x 48  
34.5 x 48  
35 x 48  
35.5 x 48  
36 x 48  
39 x 48  
40 x 48

42 x 48  
43 x 48

44 x 48  
45 x 48  
46 x 48  
46.5 x 48  
47 x 48  
48 x 48  
58 x 48  
59 x 48  
63 x 48  
70 x 48  
70.5 x 48  
71 x 48

**-54-**

23 x 54  
27 x 54  
29 x 54  
31 x 54  
32 x 54  
33 x 54  
34 x 54  
34.5 x 54  
35 x 54  
36 x 54  
43 x 54  
57 x 54

**-60-**

16.5 x 60  
17 x 60  
18 x 60  
19 x 60  
21 x 60  
22 x 60  
22.5 x 60  
23 x 60  
23.5 x 60  
24 x 60  
24.5 x 60  
25 x 60  
26 x 60  
27 x 60  
28 x 60  
28.5 x 60  
29 x 60  
29.5 x 60  
30 x 60  
30.5 x 60  
31 x 60  
32 x 60  
32.5 x 60  
33 x 60  
33.5 x 60  
34 x 60  
34.25 x 60  
34.5 x 60  
34.75 x 60  
35 x 60  
35.5 x 60

**-64-**

36 x 60  
37 x 60  
38 x 60  
38.5 x 60  
39 x 60  
40 x 60  
40.5 x 60  
41 x 60  
42 x 60  
43 x 60  
45 x 60  
46 x 60  
46.5 x 60  
47 x 60  
47.5 x 60  
48 x 60  
53 x 60  
54 x 60  
57 x 60  
58 x 60  
58.5 x 60  
59 x 60  
62 x 60  
63 x 60  
69.5 x 60  
70 x 60  
70.5 x 60  
71 x 60  
71.5 x 60  
72 x 60  
75 x 60  
81 x 60  
82 x 60  
82.5 x 60  
93 x 60  
95 x 60

**-64-**

15 x 64  
17 x 64  
24 x 64  
27 x 64  
30 x 64  
31 x 64  
32 x 64  
33.5 x 64  
34 x 64  
34.5 x 64  
35 x 64  
36 x 64  
39 x 64  
47 x 64

**-68-**

23 x 68  
25 x 68

**-72-**

10 x 72  
11 x 72  
12 x 72  
13 x 72  
14.5 x 72  
15 x 72  
16 x 72

17 x 72

18 x 72  
19 x 72  
22 x 72  
22.5 x 72  
23 x 72  
24 x 72  
24.5 x 72  
25 x 72  
25.5 x 72  
26 x 72  
26.5 x 72  
27 x 72  
28 x 72  
28.5 x 72  
29 x 72  
29.5 x 72  
30 x 72  
30.5 x 72  
31 x 72  
31.5 x 72  
32 x 72  
32.5 x 72  
33 x 72  
34 x 72  
34.25 x 72  
34.5 x 72  
34.75 x 72  
35 x 72  
35.5 x 72  
36 x 72  
37 x 72

**-78-**

38 x 72  
39 x 72  
40.5 x 72  
42 x 72  
43 x 72  
46 x 72  
46.5 x 72  
47 x 72  
48 x 72  
52.5 x 72  
54 x 72  
58 x 72  
58.5 x 72  
59 x 72  
62 x 72  
62.5 x 72  
63 x 72  
66 x 72  
69.5 x 72  
70 x 72  
70.5 x 72  
71 x 72  
72 x 72  
78 x 72  
83 x 72  
89 x 72  
95 x 72

38 x 72

39 x 72  
40.5 x 72  
42 x 72  
43 x 72  
46 x 72  
46.5 x 72  
47 x 72  
48 x 72  
52.5 x 72  
54 x 72  
58 x 72  
58.5 x 72  
59 x 72  
62 x 72  
62.5 x 72  
63 x 72  
66 x 72  
69.5 x 72  
70 x 72  
70.5 x 72  
71 x 72  
72 x 72  
78 x 72  
83 x 72  
89 x 72  
95 x 72

**-84-**

34.5 x 78  
36 x 78

**PACKAGING** Up to 36" wide: 4 per carton. | 36.5" to 47.5" wide: 3 per carton. | 48" or wider: 2 per carton.

Available in Bright White

LOTUSBLIND.COM

# 2" Faux Wood Blind Bright White-Embossed



Warehouse and Container

Most Complete Assortment  
of Stock Sizes Available

2" Wide Slats for Designer Look

1-Year Warranty

3-1/4" Crown Valance

3/4" Returns

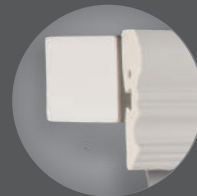
Heavy Duty Metal,  
Low Profile Headrail

Static Resistant Slats  
Won't Warp or Crack

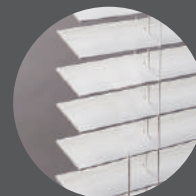
Child-Safe Cordless Design



*All widths are 1/2" less than  
stated size to allow for inside mounting*



*Crown Valance with  
Low Profile Headrail*



*Slat - Flat  
PVC Foam*



*Bottomrail - Hollow  
Extruded PVC*

**THE BEAUTIFUL LOTUS & WINDOWARE 2" FAUX WOOD BLIND OFFERS THE WARM LOOK OF WOOD AT AN AFFORDABLE PRICE.** The 2" Faux Wood Blind is engineered using a unique steel headrail with new memory flexibility technology making it more durable. The specially engineered hollow bottomrail makes operation smooth and holds slats in perfect alignment.

Our 2" Faux Wood Blind is made of a static and fade resistant synthetic material that won't crack, split or warp. The elegance, low maintenance and affordability of our 2" Faux Wood Bright White Blind makes it the perfect compliment to any window.



# SPECIFICATIONS

## » HEADRAIL

Painted roll formed low profile steel headrail 2.28" width x 1.55" height x 0.04" thick.

## » HEADRAIL ENDCAPS

Injection molded PVC.

## » BOTTOMRAIL

Hollow extruded PVC bottomrail 2.05" width x 0.866" height x 0.075" thick.

## » BOTTOMRAIL ENDCAPS

Injection molded plastic.

## » WAND

Extruded PVC round shap. 0.394" diameter.

## » SLAT

Delicate wood grain finish Faux wood 0.11" thick x 1.98" width.

## » VALANCE

Smooth finish Faux wood crown valance 0.177" thick x 3.25" width.

## » TAPE ROLLER SUPPORT

Injection molded plastic with metal roller minimizing cord tray.

## » TAPE ROLLER

Injection molded plastic with ladder locking legs.

## » TILT ROD

Plated steel, diameter 0.22".

## » TILTER

Injection molded plastic clear housing.

## » LADDER

Woven polyester ladder 2.126" spacing.

## » BOTTOMRAIL ANCHORS

Injection molded plastic.

## » CENTER SUPPORT

Painted steel.

## » MOUNTING BRACKET

Painted steel with hinged locking front cover.

## » HOLD DOWN BRACKET

Plated steel.

## CROWN VALANCES

Available in Bright White

### Miter-Cut

PRODUCT CODE CV-M

26 37 72

### Straight-Cut

PRODUCT CODE CV-S

35 70 108  
63 71

## CROWN VALANCE RETURN SETS

Available in Bright White

PRODUCT CODE

CVR-M (Mitered)

CVR-S (Straight - uses CVCorner clip)

5/8" 1-5/8" 2-1/2"  
3/4"

PRODUCT CODE

# FLX-E

### - 24 -

22.5 x 24  
23 x 24

### - 36 -

22 x 36  
22.5 x 36  
23 x 36  
24 x 36  
28 x 36  
30 x 36  
31 x 36  
34 x 36  
34.5 x 36  
35 x 36  
36 x 36  
46 x 36  
46.5 x 36  
47 x 36  
48 x 36  
59 x 36  
71 x 36

### - 48 -

18 x 48  
22 x 48  
22.5 x 48  
23 x 48  
26 x 48  
27 x 48  
29 x 48  
30 x 48  
31 x 48  
33 x 48  
34 x 48  
34.5 x 48  
35 x 48  
36 x 48  
39 x 48  
41 x 48  
42 x 48  
45 x 48  
46 x 48  
46.5 x 48  
47 x 48  
48 x 48  
53 x 48  
58 x 48  
58.5 x 48  
59 x 48  
63 x 48  
70 x 48  
70.5 x 48  
71 x 48  
72 x 48

### - 54 -

27 x 54  
31 x 54  
34.5 x 54  
35 x 54  
36 x 54  
  
- 60 -  
16.5 x 60  
19 x 60  
22 x 60  
23 x 60  
24 x 60  
25 x 60  
26 x 60  
27 x 60  
28 x 60  
29 x 60  
30 x 60  
31 x 60  
32 x 60  
32.5 x 60  
33 x 60  
34 x 60  
34.5 x 60  
35 x 60  
35.5 x 60  
36 x 60  
37 x 60  
38 x 60  
39 x 60

### 42 x 60

43 x 60  
45 x 60  
46 x 60  
46.5 x 60  
47 x 60  
48 x 60  
53 x 60  
54 x 60  
57 x 60  
58.5 x 60  
59 x 60  
62 x 60  
63 x 60  
70 x 60  
70.5 x 60  
71 x 60  
72 x 60

### - 64 -

15 x 64  
17 x 64  
31 x 64  
34 x 64  
34.5 x 64  
35 x 64  
36 x 64  
40 x 64  
52 x 64

### - 72 -

11 x 72  
12 x 72  
14.5 x 72  
16 x 72  
17 x 72  
22 x 72  
23 x 72  
24 x 72  
24.5 x 72  
25 x 72  
26 x 72  
27 x 72  
28 x 72  
29 x 72  
30 x 72  
31 x 72  
33 x 72  
34 x 72  
34.5 x 72  
35 x 72  
36 x 72  
37 x 72  
38 x 72  
39 x 72  
40.5 x 72  
42 x 72  
43 x 72  
46 x 72  
47 x 72

### 48 x 72

52 x 72  
54 x 72  
58 x 72  
59 x 72  
62 x 72  
63 x 72  
66 x 72  
70 x 72  
70.5 x 72  
71 x 72  
72 x 72  
  
- 84 -  
14 x 84  
23 x 84  
25 x 84  
27 x 84  
29 x 84  
31 x 84  
34 x 84  
34.5 x 84  
35 x 84  
36 x 84  
39 x 84  
43 x 84  
47 x 84  
48 x 84

### - 96 -

23 x 96  
27 x 96  
29 x 96  
35 x 96  
36 x 96  
39 x 96  
48 x 96



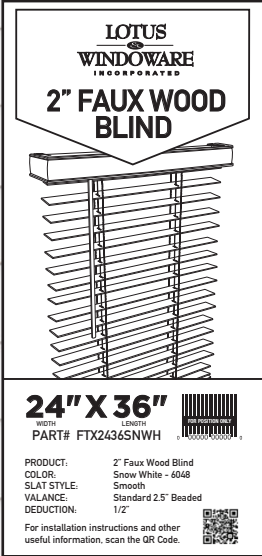
**PACKAGING** Up to 36" wide: 4 per carton. | 36.5" to 47.5" wide: 3 per carton. | 48" or wider: 2 per carton.

Available in Bright White

# 2" Faux Wood Blind Snow White



## Warehouse and Container



Large Assortment of Stock Sizes Available

2" Wide Slats for Designer Look

1-Year Warranty

2-1/2" Beaded Valance

3/4" Returns

Extruded Low Profile PVC Headrail

Static Resistant Slats  
Won't Warp or Crack

Child-Safe Cordless Design

*All widths are 1/2" less than stated size to allow for inside mounting*



Beaded Valance with Low Profile PVC Headrail



Slat - Flat PVC Foam



Bottomrail - Hollow Extruded PVC

**THE BEAUTIFUL LOTUS & WINDOWWARE 2" FAUX WOOD BLIND OFFERS THE WARM LOOK OF WOOD AT AN AFFORDABLE PRICE.** The 2" Faux Wood Blind is engineered using a unique PVC headrail with new memory flexibility technology making it more durable. The specially engineered hollow bottomrail makes operation smooth and holds slats in perfect alignment.

Our 2" Faux Wood Blind is made of a static and fade resistant synthetic material that won't crack, split or warp. The elegance, low maintenance and affordability of our 2" Faux Wood Snow White Blind makes it the perfect compliment to any window.

# SPECIFICATIONS

- » **HEADRAIL**  
Extruded PVC low profile headrail 2.25" width x 1.5" height x 0.077" thick.
- » **BOTTOMRAIL**  
Hollow extruded PVC bottomrail 2.05" width x 0.866" height x 0.075" thick.
- » **BOTTOMRAIL ENDCAPS**  
Injection molded plastic.
- » **WAND**  
Extruded PVC round shap. 0.394" diameter.
- » **SLAT**  
Smooth finish Faux wood 0.11" thick x 1.98" width.
- » **VALANCE**  
Smooth finish Faux wood beaded valance 0.315" thick x 2.5" width.
- » **TAPE ROLLER SUPPORT**  
Injection molded plastic with metal roller minimizing cord tray.
- » **TAPE ROLLER**  
Injection molded plastic with ladder locking legs.
- » **TILT ROD**  
Plated steel, diameter 0.22".
- » **TILTER**  
Injection molded plastic clear housing.
- » **LADDER**  
Woven polyester ladder 2.126" spacing.
- » **BOTTOMRAIL ANCHORS**  
Injection molded plastic.
- » **CENTER SUPPORT**  
Painted steel.
- » **MOUNTING BRACKET**  
Painted steel with hinged locking front cover.
- » **HOLD DOWN BRACKET**  
Injection molded plastic.

## BEADED VALANCES

Available in Snow White

**Straight-Cut** PRODUCT CODE FXSV-SSNWH

70-1/2" 108"

## BEADED VALANCE RETURN SETS

Available in Snow White

**Miter-Cut** PRODUCT CODE FXSVR-MSNWH

3/4" 2-1/2"

PRODUCT CODE

**FTX**

### - 24 -

23 x 24  
27 x 24  
31 x 24  
35 x 24  
39 x 24  
43 x 24  
47 x 24

### - 48 -

17 x 48  
23 x 48  
24 x 48  
29 x 48  
31 x 48  
35 x 48  
39 x 48  
47 x 48  
48 x 48

### - 60 -

17 x 60  
23 x 60  
27 x 60  
29 x 60  
30 x 60  
31 x 60  
34 x 60  
34.5 x 60  
35 x 60  
36 x 60  
39 x 60  
43 x 60  
47 x 60  
48 x 60  
51 x 60  
54 x 60  
58 x 60  
59 x 60  
63 x 60  
70 x 60  
70.5 x 60  
71 x 60  
72 x 60

### - 72 -

11 x 72  
17 x 72  
23 x 72  
24 x 72  
25 x 72  
27 x 72  
29 x 72  
30 x 72  
31 x 72  
34 x 72  
34.5 x 72  
35 x 72  
36 x 72  
39 x 72  
43 x 72  
47 x 72  
48 x 72  
51 x 72  
54 x 72  
59 x 72  
63 x 72  
70 x 72  
70.5 x 72  
71 x 72  
72 x 72

### - 84 -

11 x 84  
17 x 84  
23 x 84  
24 x 84  
25 x 84  
27 x 84  
29 x 84  
31 x 84  
34 x 84  
35 x 84  
39 x 84  
43 x 84  
47 x 84  
71 x 84

### - 96 -

17 x 96  
23 x 96  
25 x 96  
27 x 96  
29 x 96  
31 x 96  
34 x 96  
35 x 96  
36 x 96  
39 x 96  
43 x 96  
47 x 96

### - 36 -

17 x 36  
23 x 36  
24 x 36  
27 x 36  
31 x 36  
35 x 36  
39 x 36  
43 x 36  
47 x 36  
59 x 36  
71 x 36

### - 42 -

24 x 42

**PACKAGING** 2 per carton.

Available in Snow White

# 2" Faux Wood Blind Soft White



## Warehouse and Container

Heavy Duty Metal,  
High Profile Headrail

Static Resistant Slats  
Won't Warp or Crack

2" Wide Slats for Designer Look

Wand Control

Durable Metal Hold Down Brackets

Easy Lift Capability

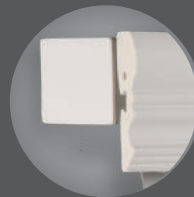
Available In White And Alabaster

Non-Leaded Formulas

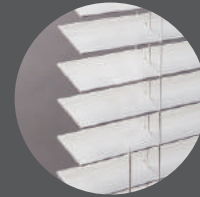
Child-Safe Cordless Design



*All widths are 1/2" less than  
stated size to allow for inside mounting*



*Crown Valance with  
High Profile Headrail*



*Slat - Flat  
PVC Foam*



*Bottomrail - Hollow  
Extruded PVC*

**THE BEAUTIFUL LOTUS & WINDOWARE 2" FAUX WOOD BLIND OFFERS THE WARM LOOK OF WOOD AT AN AFFORDABLE PRICE.** The 2" Faux Wood Blind is engineered using a unique steel headrail with new memory flexibility technology making it more durable. The specially engineered hollow bottomrail makes operation smooth and holds slats in perfect alignment.

Our 2" Faux Wood Blind is made of a static and fade resistant synthetic material that won't crack, split or warp. The 2" Faux Wood Blinds are easy to clean so they are great for kids' rooms. The elegance, low maintenance and affordability of our 2" Faux Wood Blind makes it the perfect compliment to any window.

# SPECIFICATIONS

- » **HEADRAIL**  
Painted roll formed high profile steel headrail 2.25" width x 2.01" height x 0.02" thick.
- » **HEADRAIL ENDCAPS**  
Injection molded PVC.
- » **BOTTOMRAIL**  
Hollow extruded PVC bottomrail 2.05" width x 0.866" height x 0.075" thick.
- » **BOTTOMRAIL ENDCAPS**  
Injection molded plastic.
- » **WAND**  
Extruded PVC round shap. 0.394" diameter.
- » **SLAT**  
Plain finish Faux wood 0.11" thick x 1.969" width.
- » **VALANCE**  
Plain finish Faux wood crown valance 0.177" thick x 3.25" width.
- » **TAPE ROLLER SUPPORT**  
Injection molded plastic with metal roller minimizing cord tray.
- » **TAPE ROLLER**  
Injection molded plastic with ladder locking legs.
- » **TILT ROD**  
Plated steel, diameter 0.244".
- » **TILTER**  
Injection molded plastic clear housing.
- » **LADDER**  
Woven polyester ladder 2.126" spacing.
- » **BOTTOMRAIL ANCHORS**  
Injection molded plastic.
- » **CENTER SUPPORT**  
Painted steel.
- » **MOUNTING BRACKET**  
Painted steel with hinged locking front cover.
- » **HOLD DOWN BRACKET**  
Plated steel.

## CROWN VALANCES

Available in White

### Miter-Cut PRODUCT CODE CV-M

26      36      72

### Straight-Cut PRODUCT CODE CV-S

35      70      95      120  
63      71      108

## CROWN VALANCE RETURN SETS

Available in White

PRODUCT CODE

**CVR-M** (Mitered)

**CVR-S** (Straight - uses CVCorner clip)

5/8"    1-5/8"    2-1/2"

PRODUCT CODE **FCX**

<b>-24-</b>	<b>-42-</b>	44 x 48	<b>-60-</b>	37 x 60	75 x 60	<b>-68-</b>	29.5 x 72	61 x 72	31 x 84
22 x 24	23 x 42	45 x 48	16 x 60	38 x 60	81 x 60	24 x 68	30 x 72	62 x 72	34 x 84
22.5 x 24	24 x 42	46.5 x 48	16.5 x 60	39 x 60	81.5 x 60	24.5 x 68	30.5 x 72	62.5 x 72	34.5 x 84
23 x 24	29 x 42	47 x 48	17 x 60	40 x 60	82 x 60	25 x 68	31 x 72	63 x 72	35 x 84
35 x 24	34.5 x 42	47.5 x 48	18 x 60	40.5 x 60	82.5 x 60		32 x 72	69 x 72	36 x 84
	46.5 x 42	48 x 48	19 x 60	41 x 60	93 x 60		32.5 x 72	69.5 x 72	39 x 84
<b>-36-</b>	58.5 x 42	57.5 x 48	22 x 60	42 x 60	95 x 60		33 x 72	70 x 72	43 x 84
22 x 36	70.5 x 42	58 x 48	22.5 x 60	43 x 60			34 x 72	70.5 x 72	46 x 84
22.5 x 36		58.5 x 48	23 x 60	44 x 60			34.5 x 72	71 x 72	47 x 84
23 x 36		59 x 48	24 x 60	46.5 x 60	<b>-64-</b>	<b>-72-</b>	35 x 72	72 x 72	54 x 84
24 x 36	<b>-48-</b>	60 x 48	25 x 60	47 x 60	15 x 64	10 x 72	35.5 x 72	75 x 72	58 x 84
27 x 36	18 x 48	63 x 48	26 x 60	48 x 60	23 x 64	11 x 72	36 x 72	83 x 72	63 x 84
28 x 36	22 x 48	70 x 48	27 x 60	48 x 60	27 x 64	13 x 72	37 x 72	89 x 72	70 x 84
28.5 x 36	22.5 x 48	70.5 x 48	28 x 60	53 x 60	30 x 64	14.5 x 72	38 x 72	95 x 72	70.5 x 84
29 x 36	23 x 48	71 x 48	28.5 x 60	54 x 60	30.5 x 64	16 x 72	39 x 72	95 x 72	71 x 84
30 x 36	26 x 48	72 x 48	29 x 60	57 x 60	31 x 64	17 x 72	40 x 72		72 x 84
31 x 36	27 x 48	95 x 48	29.5 x 60	58 x 60	32 x 64	18 x 72	40.5 x 72	<b>-78-</b>	34.5 x 78
34 x 36	28 x 48		30 x 60	59 x 60	33 x 64	19 x 72	41 x 72	35 x 78	<b>-96-</b>
34.5 x 36	28.5 x 48	<b>-50-</b>	30.5 x 60	59 x 60	34 x 64	22 x 72	42 x 72	36 x 78	23 x 96
35 x 36	29 x 48	51 x 50	31 x 60	60 x 60	34.5 x 64	22.5 x 72	42 x 72		27 x 96
36 x 36	30 x 48		31.5 x 60	60 x 60	35 x 64	23 x 72	43 x 72		29 x 96
46 x 36	31 x 48	<b>-54-</b>	32 x 60	61 x 60	36 x 64	23.5 x 72	43 x 72	<b>-84-</b>	12 x 84
46.5 x 36	34 x 48	29 x 54	33 x 60	62 x 60	39 x 64	24 x 72	46 x 72	12 x 84	35 x 96
47 x 36	34.5 x 48	30 x 54	33.5 x 60	62.5 x 60	43 x 64	24.5 x 72	46.5 x 72	16.5 x 84	36 x 96
48 x 36	35 x 48	31 x 54	34 x 60	63 x 60	46 x 64	25 x 72	47 x 72	17 x 84	39 x 96
58.5 x 36	36 x 48	31 x 54	34.5 x 60	67 x 60	48 x 64	25.5 x 72	48 x 72	23 x 84	43 x 96
59 x 36	39 x 48	34 x 54	34.75 x 60	68 x 60	52 x 64	26 x 72	52.5 x 72	24 x 84	48 x 96
70 x 36	40 x 48	34.5 x 54	35 x 60	69 x 60	58 x 64	26.5 x 72	54 x 72	25 x 84	58 x 96
70.5 x 36	42 x 48	35 x 54	35.5 x 60	70 x 60	62 x 64	27 x 72	57 x 72	27 x 84	63 x 96
71 x 36	43 x 48	36 x 54	36 x 60	70.5 x 60	70 x 64	28 x 72	58 x 72	28 x 84	71 x 96
				71 x 60	70.5 x 64	28.5 x 72	58.5 x 72	29 x 84	72 x 96
				72 x 60	71 x 64	29 x 72	59 x 72	30 x 84	

# 2-1/2" Faux Wood Blind Bright White



## Warehouse and Container



Most Complete Assortment of Stock Sizes Available

2-1/2" Wide Slats for Designer Look

1-Year Warranty

3" Designer Valance Complete With 1-1/2" Mitered Returns

Heavy Duty Metal, Low Profile Headrail

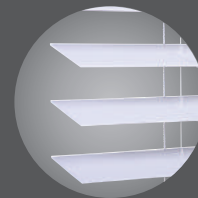
Static Resistant Slats Won't Warp or Crack

Child-Safe Cordless Design

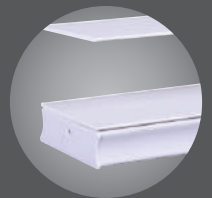
*All widths are 1/2" less than stated size to allow for inside mounting*



*Crown Valance with Low Profile Headrail*



*Slat - Flat PVC Foam*



*Bottomrail - Hollow Extruded PVC*

### THE BEAUTIFUL LOTUS & WINDOWARE 2-1/2" FAUX WOOD BLIND OFFERS THE WARM LOOK OF WOOD AT AN AFFORDABLE PRICE.

The 2-1/2" Faux Wood Blind is engineered using a unique steel headrail with new memory flexibility technology making it more durable. The specially engineered hollow bottomrail makes operation smooth and holds slats in perfect alignment.

Our 2-1/2" Faux Wood Blind is made of a static and fade resistant synthetic material that won't crack, split or warp. The elegance, low maintenance and affordability of our 2-1/2" Faux Wood Blind makes it the perfect compliment to any window.

# SPECIFICATIONS

## » HEADRAIL

Painted roll formed low profile steel headrail 2.25" width x 1.55" height x 0.04" thick.

## » HEADRAIL ENDCAPS

Injection molded PVC.

## » BOTTOMRAIL

Hollow extruded PVC bottomrail 2.57" width x 0.866" height x 0.07" thick.

## » BOTTOMRAIL ENDCAPS

Injection molded plastic.

## » WAND

Extruded PVC round shape. 0.394" diameter.

## » SLAT

Plain finish Faux wood .11" thick x 2.50" width.

## » VALANCE

Plain finish Faux wood designer valance 0.59" thick x 2.99" width.

## » TAPE ROLLER SUPPORT

Injection molded plastic with metal roller minimizing cord tray.

## » TAPE ROLLER

Injection molded plastic with ladder locking legs.

## » TILT ROD

Aluminum .22."

## » TILTER

Injection molded plastic clear housing.

## » LADDER

Woven polyester ladder 2.28" spacing.

## » BOTTOMRAIL ANCHORS

Injection molded plastic.

## » CENTER SUPPORT

Painted steel.

## » MOUNTING BRACKET

Painted steel with hinged locking front cover.

## » HOLD DOWN BRACKET

Plated steel.

## DESIGNER VALANCES

Available in Bright White

### Miter-Cut PRODUCT CODE DV-M

26 36 72

### Straight-Cut PRODUCT CODE DV-S

108

## DESIGNER VALANCE RETURN SETS

Available in Bright White PRODUCT CODE

3/4" 1-1/2" 2-1/2" **DVR-M** (Mitered)  
3-1/4"

PRODUCT CODE

**FGX**

### - 24 -

23 x 24

### - 36 -

22.5 x 36

23 x 36

35 x 36

47 x 36

59 x 36

71 x 36

### - 48 -

23 x 48

27 x 48

31 x 48

35 x 48

36 x 48

42 x 48

46.5 x 48

47 x 48

48 x 48

58 x 48

58.5 x 48

59 x 48

71 x 48

72 x 48

### - 60 -

22.5 x 60

23 x 60

27 x 60

29 x 60

30 x 60

31 x 60

32 x 60

34 x 60

34.5 x 60

35 x 60

35.5 x 60

36 x 60

39 x 60

43 x 60

46.5 x 60

47 x 60

54 x 60

58 x 60

58.5 x 60

59 x 60

63 x 60

70 x 60

70.5 x 60

71 x 60

72 x 60

### - 64 -

35 x 64

### - 72 -

11 x 72

17 x 72

22.5 x 72

23 x 72

24 x 72

25 x 72

27 x 72

28.5 x 72

29 x 72

30 x 72

30.5 x 72

31 x 72

34 x 72

34.5 x 72

35 x 72

36 x 72

39 x 72

43 x 72

46.5 x 72

47 x 72

48 x 72

54 x 72

58.5 x 72

59 x 72

62.5 x 72

63 x 72

70 x 72

70.5 x 72

71 x 72

72 x 72

### - 84 -

23 x 84

25 x 84

29 x 84

31 x 84

35 x 84

39 x 84

43 x 84

71 x 84

### - 96 -

27 x 96

35 x 96

39 x 96

48 x 96

**PACKAGING** Up to 36" wide: 4 per carton. | 36.5" or wider: 2 per carton.

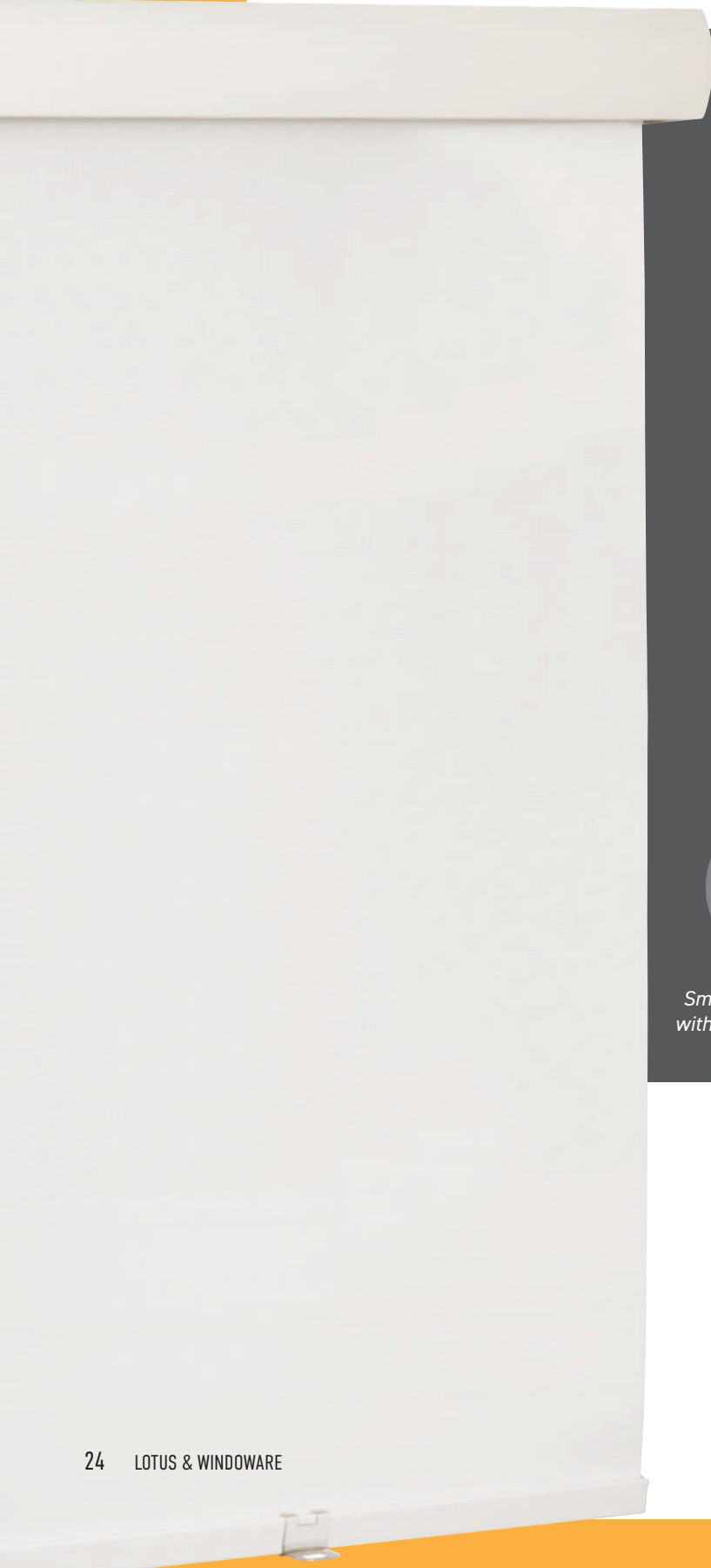
Available in Bright White

LOTUSBLIND.COM

23

# Roller Shades

1% AND BLACKOUT  
AVAILABLE IN WHITE



## Warehouse and Container

Available in 1% and Blackout  
Options for Light Control

Durable, Low-Maintenance  
Polyester Material

Spring Roller for Easy Operation

1-Year Warranty

Valance Included with 1/2"  
Mitered Returns

Efficient, Cost-Effective & Versatile

Child-Safe Cordless Design

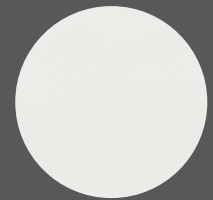
*All widths are 1/8" less than  
stated size to allow for semi-inside mounting*



*Smooth Modern Valance  
with 1/2" Mitered Returns*



*Shade Handle for  
Easy Operation*



*Blended Polyester  
Fabric - White*

**INTRODUCING NEW ROLLER SHADE OPTIONS** Experience effortless operation with our cost-effective Roller shades, ensuring seamless adjustments for optimal light control. Hassle-free setup is guaranteed with included Installation/ Mounting Hardware. Choose from 1% or Blackout options, complemented by a sleek valance for a polished finish. Our Child-Safe Cordless Design prioritizes safety for all, offering peace of mind. Enjoy energy efficiency and the assurance of our 1-Year Warranty. Elevate your space with our versatile and functional Roller Shades today.



# SPECIFICATIONS

## SIZING INFORMATION

- » Approximate Inside Mount Roller Deduction - 1/8"
- » Approximate Deduction on Fabric - 0.9"
- » 1 on 1 Headrail Will Have 1-1/16" Gap Between Fabrics

## I/M DEPTH REQUIREMENTS

Roller Shade (With Valance)	FLUSH MOUNT	SEMI-INSIDE MOUNT
	3-15/16 inches	2 inches (Min Depth)

Roller Shade (Without Valance)	FLUSH MOUNT	SEMI-INSIDE MOUNT
	2-3/4 inches	3/4 inches (Min Depth)

- » **COLOR:**  
White
- » **MATERIAL**  
Fabric (Blended Polyester)  
Smooth Texture
- » **VALANCE RETURN TYPE**  
1/2" Miter Cut Valance will be 3/8" wider than the order size
- » **MOUNTING BRACKETS**  
Includes SEMI-IM Brackets: C Clip

PRODUCT CODE **RS**

<b>- 36 -</b>	30 x 48	29 x 60	62.5 x 60	31.5 x 72	<b>- 84 -</b>
23 x 36	31 x 48	30 x 60	63 x 60	32.5 x 72	24 x 84
24 x 36	34 x 48	30.5 x 60	68 x 60	33 x 72	25 x 84
28 x 36	34.5 x 48	31 x 60	69 x 60	34 x 72	26.5 x 84
28.5 x 36	35 x 48	31.5 x 60	69.5 x 60	34.5 x 72	27 x 84
30 x 36	36 x 48	32 x 60	70 x 60	35 x 72	29 x 84
31 x 36	39 x 48	33 x 60	70.5 x 60	35.5 x 72	31 x 84
34 x 36	40 x 48	34 x 60	71 x 60	36 x 72	34 x 84
34.5 x 36	43 x 48	34.5 x 60	71.5 x 60	37 x 72	34.5 x 84
35 x 36	45 x 48	35 x 60	72 x 60	39 x 72	35 x 84
36 x 36	46 x 48	35.5 x 60	82.5 x 60	40 x 72	35 x 84
46 x 36	46.5 x 48	36 x 60	95 x 60	41 x 72	47 x 84
46.5 x 36	47 x 48	37 x 60		42 x 72	63 x 84
47 x 36	48 x 48	38 x 60	<b>- 72 -</b>	43 x 72	70 x 84
48 x 36	58 x 48	39 x 60	23 x 72	46 x 72	70.5 x 84
58.5 x 36	58.5 x 48	40 x 60	23.5 x 72	46.5 x 72	71 x 84
59 x 36	59 x 48	41 x 60	24 x 72	47 x 72	
70 x 36	60 x 48	42 x 60	24.5 x 72	48 x 72	<b>- 96 -</b>
70.5 x 36	63 x 48	43 x 60	25 x 72	54 x 72	23 x 96
71 x 36	70 x 48	45 x 60	25.5 x 72	58 x 72	27 x 96
72 x 36	70.5 x 48	46 x 60	26 x 72	58.5 x 72	29 x 96
	71 x 48	46.5 x 60	26.5 x 72	59 x 72	31 x 96
<b>- 48 -</b>	72 x 48	47 x 60	27 x 72	62 x 72	35 x 96
23 x 48	95 x 48	48 x 60	28 x 72	62.5 x 72	36 x 96
26 x 48		53 x 60	28.5 x 72	63 x 72	39 x 96
27 x 48	<b>- 60 -</b>	54 x 60	29 x 72	70 x 72	48 x 96
28.5 x 48	23 x 60	58 x 60	29.5 x 72	70.5 x 72	63 x 96
29 x 48	24 x 60	58.5 x 60	30 x 72	71 x 72	72 x 96
	27 x 60	59 x 60	30.5 x 72	72 x 72	
	28 x 60	60 x 60	31 x 72	95 x 72	
	28.5 x 60	62 x 60			

**PACKAGING** Up to 48" wide: 4 per carton. | Wider than 48": 2 per carton.

All sizes available in 1% and blackout

VS

# 3-1/2" Economy Vertical Blind



All Sizes Available in Smooth-Finish White  
 Complete With Matching Valance  
 Child-Safe Wand Control

Stack Left or Right  
 Heavy Duty Roll Formed Steel Headrail  
 1-Year Warranty



<b>-36-</b> 35 x 36 71 x 36	<b>-58-</b> 34 x 58	<b>-72-</b> 35 x 72 43 x 72 47 x 72 71 x 72 72 x 72 102 x 72	85 x 84 97 x 84 102 x 84 <sup>A</sup> 104 x 84 <sup>A</sup> 110 x 84 116 x 84
<b>-46-</b> 46 x 46	<b>-60-</b> 23 x 60 35 x 60 43 x 60 47 x 60	<b>-84-</b> 54 x 84 59 x 84 66 x 84 <sup>A</sup> 71 x 84 72 x 84 78 x 84 <sup>A</sup>	<b>-96-</b> 78 x 96 102 x 96 110 x 96
<b>-48-</b> 35 x 48 47 x 48 59 x 48 63 x 48 71 x 48 72 x 48	<b>-60-</b> 23 x 60 35 x 60 43 x 60 47 x 60	<b>-84-</b> 54 x 84 59 x 84 66 x 84 <sup>A</sup> 71 x 84 72 x 84 78 x 84 <sup>A</sup>	<b>-96-</b> 78 x 96 102 x 96 110 x 96



## SPECIFICATIONS

- » HEADRAIL**  
 Headrail is made of roll formed steel 1-1/2" wide by 1-1/4" high with a minimum thickness of 0.02". Headrail only in White color, use on White and Alabaster slats.
- » PINION ROD**  
 The pinion rod is an eight-prong system made of extruded aluminum. The pinion rod passes through each carrier and allows for simultaneous rotation.
- » CARRIERS**  
 Injection molded PVC with eight-prong rotation system, carriers have self-lubricating wheels for reduced friction. Carriers allow for 180 degree simultaneous rotation.
- » WAND**  
 30" wand.
- » END CONTROL**  
 Each end is equipped with an injection molded PVC idle end which supports the pinion rod.
- » VANES**  
 Made of extruded, non-lead rigid PVC. Vane thickness is 0.0197" to 0.0236". Vanes are 3-1/2" wide and are flame retardant.
- » STACK**  
 Available in one way draw that will stack left or right.



End Control - PVC Idle End



Carriers - Injection Molded PVC



30" Wand

All Sizes Available in Smooth Finish White  
 A = Also Available in Smooth Finish Alabaster.  
 All Sizes are Outside Mounts

# Economy Steel Vertical Headrails

Warehouse and Container

22.5	54	75
34	57	76
34.5	58	78
35	59	85
36	60	86
38	63	94
41	64	96
43	66	102
45.5	69.5	104
46	70	110
47	70.5	118
48	71	
53	72	

## PACKAGING

Bulk packed, individually wrapped  
Widths less than 32" - 12 pieces per carton  
Widths 32" and above - 6 pieces per carton

All Sizes Available in White

VANES SOLD SEPARATELY



## SPECIFICATIONS

### » HEADRAIL

Headrail is made of roll formed steel 1-1/2" wide by 1-1/4" high with a minimum thickness of 0.02".

### » CARRIERS

Injection molded PVC with eight-prong rotation system, carriers have self-lubricating wheels for reduced friction. Carriers allow for 180 degree simultaneous rotation.

### » END CONTROL

Each end is equipped with an injection molded PVC idle end which supports the pinion rod.

### » PINION ROD

The pinion rod is an eight-prong system made of extruded aluminum. The pinion rod passes through each carrier and allows for simultaneous rotation.

### » WAND

30" wand.

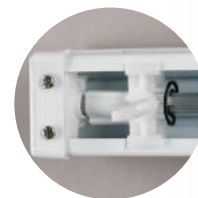
### » BRACKET

Painted Steel.

### » STACK

Available in one way draw that will stack left or right.

VANES SOLD SEPARATELY



*Headrail Only makes boosting inventory easy - just add vanes!*

## Optional Length Wands

### WHITE AND ALABASTER

Length in inches 48 | 60 | 72

PRODUCT CODE | VS-WAND

# Options Ready-Made Vertical Blind

Headrails constructed of Sturdy Aluminum with Brackets for inside or Outside Mounting

Smooth Curved PVC Vanes

Wand-Control

1-Year Warranty

Complete with Matching Valance

We took your favorite aluminum headrails and added the hardware and vanes into one package to help you sell and install much faster, keeping your inventories ready and your customers happy. The headrail is reversible making left or right stacking available. Complete with the easy-care room-darkening vanes you already know. Options are always a strong choice!

## OPTIONS READY-MADE VERTICAL BLIND

### ONE-WAY WAND DRAW

PRODUCT CODE | VNOW

- 84 -

78 x 84

**PACKAGING** 2 per carton

# Options Aluminum Vertical Headrails

All sizes available in White. Outside Mount, Width in Inches.



**ONE-WAY, DRAW WAND-CONTROL** PRODUCT CODE | VNOW

43	48	63	70	85	110	126
45	54	66	71	94	112	144
46	58	67.5	72	102	118	
47	60	69.5	78	106	120	



**CENTER-DRAW WAND-CONTROL** PRODUCT CODE | VNCW

106	116	122	138	148
110	120	126	144	156

All Sizes Available in White.

**VANES SOLD SEPARATELY**

## SPECIFICATIONS

- » **HEADRAIL**  
Extruded Aluminum 1.736" width x 1.299" height x 0.03" thick
- » **VANE HANGER**  
Injection molded plastic with single opening
- » **CARRIER**  
Injection molded plastic carrier with self-aligning clutch system.
- » **PINION ROD**  
Four-prong extruded aluminum.
- » **BRACKET**  
Painted Steel.
- » **WAND CONTROL**  
Attached injection molded plastic swivel tilter with 30" metal wand, 0.315" diameter.



One-Way Draw

Wand Control

### PACKAGING

Bulk packed, individually wrapped  
Widths 36" and below - 12 pieces per carton  
Widths over 36" - 6 pieces per carton

Warehouse and Container

# 3-1/2" Room Darkening Vertical Vanes

Made of extruded nonleaded rigid PVC. Vane thickness is .0197" to .0236". Vanes are 3-1/2" wide and are flame retardant.

## .020" VERTICAL VANES SMOOTH WHITE

100 pieces per carton

36	48	60	92.5
43.5	51.5	64	93.5
44	52.5	69	94.5
44.5	54	78	96
45	56	81.5	98.5
46	56.5	82.5	100
46.5	58	84	110
47	58.5	92	120
	59		



White

50 pieces per carton

46	82.5
----	------

## .020" VERTICAL VANES SMOOTH ALABASTER

100 pieces per carton

48	82.5
60	96



Alabaster

## Quick Reference & Ordering Guidelines

**Broken Package:** A 25% surcharge for ordering broken packages (not ordering in full carton packs) will be incurred on 1" and vertical products. There is no additional charge for ordering loose pieces of 2" and 2-1/2" Faux Wood products or 2" Vinyl-Plus. Carton Quantities can be found on the item detail page, or in the catalog.

**Small Order:** A \$5.00 Small Order Surcharge will be added to any order under \$50.00

**Blind Measurements:** All horizontal blinds are inside mounts (1/2" narrower than stated width) and must be ordered as such. All vertical blinds and their components are ordered as exact measurements.

**Customization:** The cut charge for making a custom size varies per product and size. The total cost of each custom blind will include the cost of the larger blind from which you are cutting and the cut charges. Please consider width-only customization to save time and money.

**Please note the following - there may be a few rare increments that cannot be accommodated**

<b>1" Vinyl:</b>	A minimum of 1/2" may be trimmed from the width.
<b>1" VinylPlus:</b>	A minimum of 1/4" may be trimmed from the width.
<b>1" Aluminum:</b>	A minimum of 1/4" may be trimmed from the width.
<b>2" VinylPlus:</b>	A minimum of 1/2" may be trimmed from the width.
<b>2" &amp; 2-1/2" Faux Wood</b>	A minimum of 1/4" may be trimmed from the width.
<b>ALL STYLES:</b>	The length of any horizontal blind cannot be reduced by more than 12".

**The width of the blinds can only be cut to whole, half, and quarter-inch measurements.  
The length of the blinds can only be cut to whole measurements.**

**CORPORATE OFFICE**  
14450 Yorba Avenue  
Chino, CA 91710  
TEL: 909-606-8866  
FAX: 909-606-8804

**MEMPHIS**  
6225 Global Drive  
Suite 110  
Memphis, TN 38141  
TEL: 901-362-9093  
FAX: 901-362-9674

Lotus & Windaware products are compliant with consumer product safety standards. Please contact your customer service representative or visit the websites of the US Consumer Product Safety Commission and the Window Coverings Safety Council for more information.

[www.cpsc.gov](http://www.cpsc.gov)  
[www.windowcoverings.org](http://www.windowcoverings.org)

All Lotus & Windaware products have been tested and meet the United States CPSC total lead content for mini blinds and have passed the NFPA 701 Flame Test. Please feel free to contact your Lotus & Windaware representative to obtain a copy of these test results or download them from our website at [www.lotusblind.com](http://www.lotusblind.com).

All Lotus & Windaware products are manufactured in an ISO 9000 certified factory.



## Your dedicated window coverings supplier.

Thank you for exploring our product catalog of ready made window blinds. Should you have any inquiries, require assistance, or wish to place an order, our dedicated team is here to help.

## Placing orders is easy!



[www.lotusblind.com](http://www.lotusblind.com)



[orders@lotusblind.com](mailto:orders@lotusblind.com)



+800-338-8826



LOTUS  
&  
WINDOWARE  
INCORPORATED

6225 Global Drive, Suite 110, Memphis, TN 38141

[LOTUSBLIND.COM](http://LOTUSBLIND.COM)